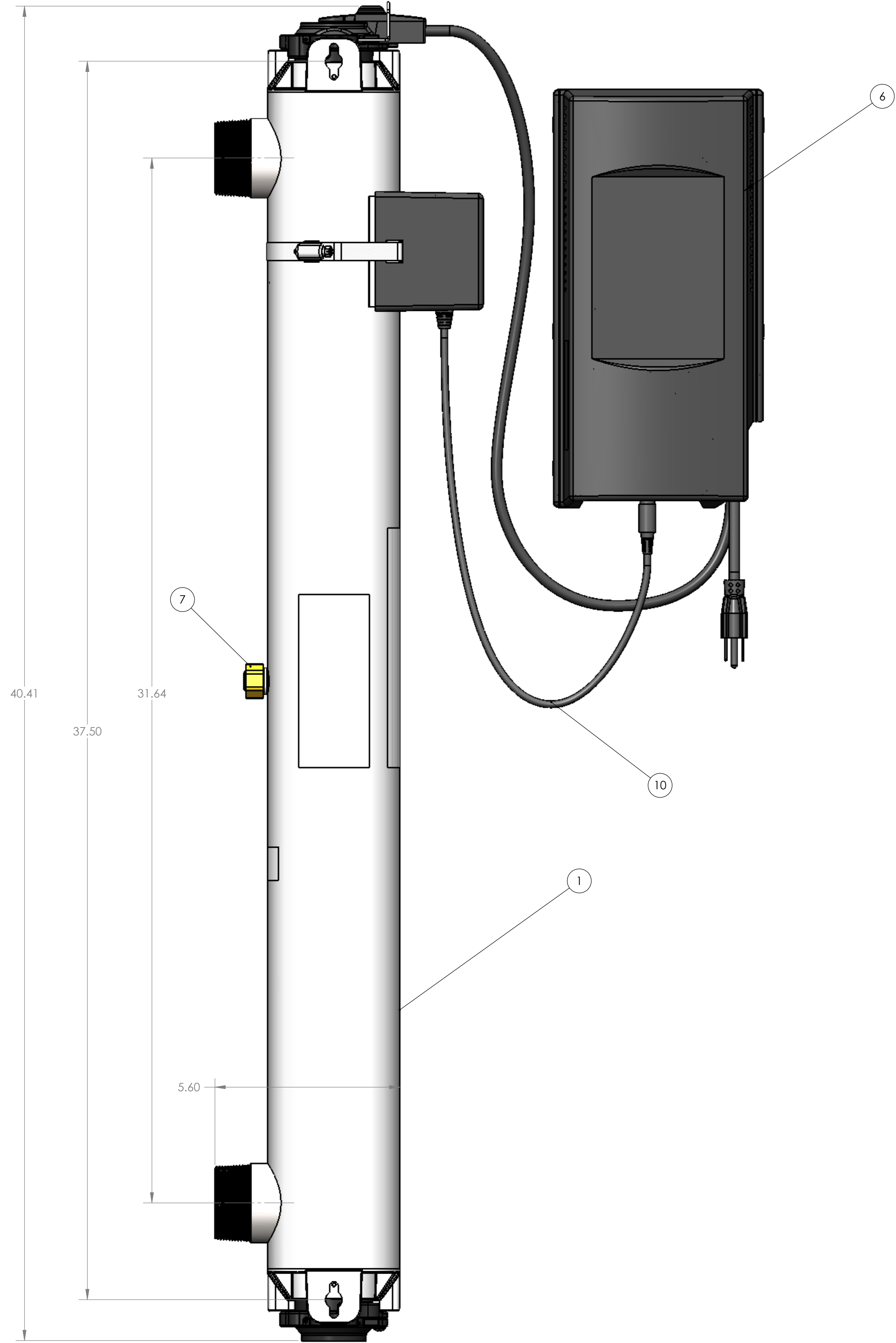
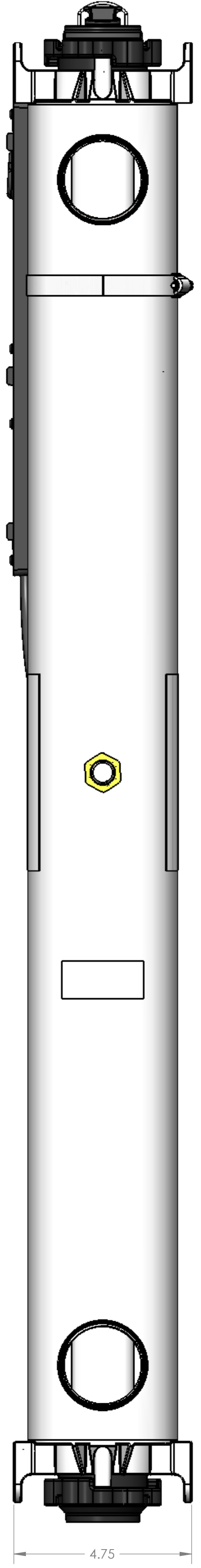


REV	SHT	ZONE	REVISION DESCRIPTION	LOG NO.	REV BY	CHK BY	APPD BY	DATE
B	2	C6	SENSOR 015458-001 REPLACED BY NEW SENSOR 270281-R	14-R052	AMB	CC	DJ	2014-09-15



PART NUMBER	DESCRIPTION	ITEM 6 PART NUMBER
660001-R	UVMAX K 120V 2" MNPT	660018-R
660002-R	UVMAX K+ 120V 2" MNPT	660019-R
660003-R	UVMAX PRO 50 120V 2" MNPT	660020-R
660004-R	UVMAX K 230V 2" MNPT	660018-R
660005-R	UVMAX K+ 230V 2" MNPT	660019-R
660006-R	UVMAX PRO 50 230V 2" MNPT	660020-R

ITEM NO	ITEM DESCRIPTION	DRAWING NO.	660001-R	660002-R	660003-R	660004-R	660005-R	660006-R
11	SENSOR ASSY, PRO	270281RG	-	1	1	-	1	1
10	COOLTOUCH KIT, UVMAX GEN2	650568	1	1	1	1	1	1
9	CORD, POWER 120V 90DEG	602636	1	1	1	-	-	-
9	CORD, POWER 230V 90DEG	602637	-	-	-	1	1	1
8	WIREFORM, HARNESS UVMAX GEN2	602896	1	1	1	1	1	1
7	PLUG KIT, SENSOR PORT UVMAX	650566	1	-	-	1	-	-
6	POWER SUPPLY, UVMAX G2 RS	SEE CHART	1	1	1	1	1	1
5	LAMP, REPL UVMAX J/PRO30 PKGD	602850G	1	1	1	1	1	1
4	BOLT, SLEEVE UVMAX GEN 2	602916	1	1	1	1	1	1
3	SLEEVE BOLT ASSY, UVMAX G2 RS	603053	1	1	1	1	1	1
2	SLV, REPL UVMAX J/PRO 30 PKGD	602910G	1	1	1	1	1	1
1	CHAMBER WLDT, 2" NPT LC	660013-R	1	1	1	1	1	1

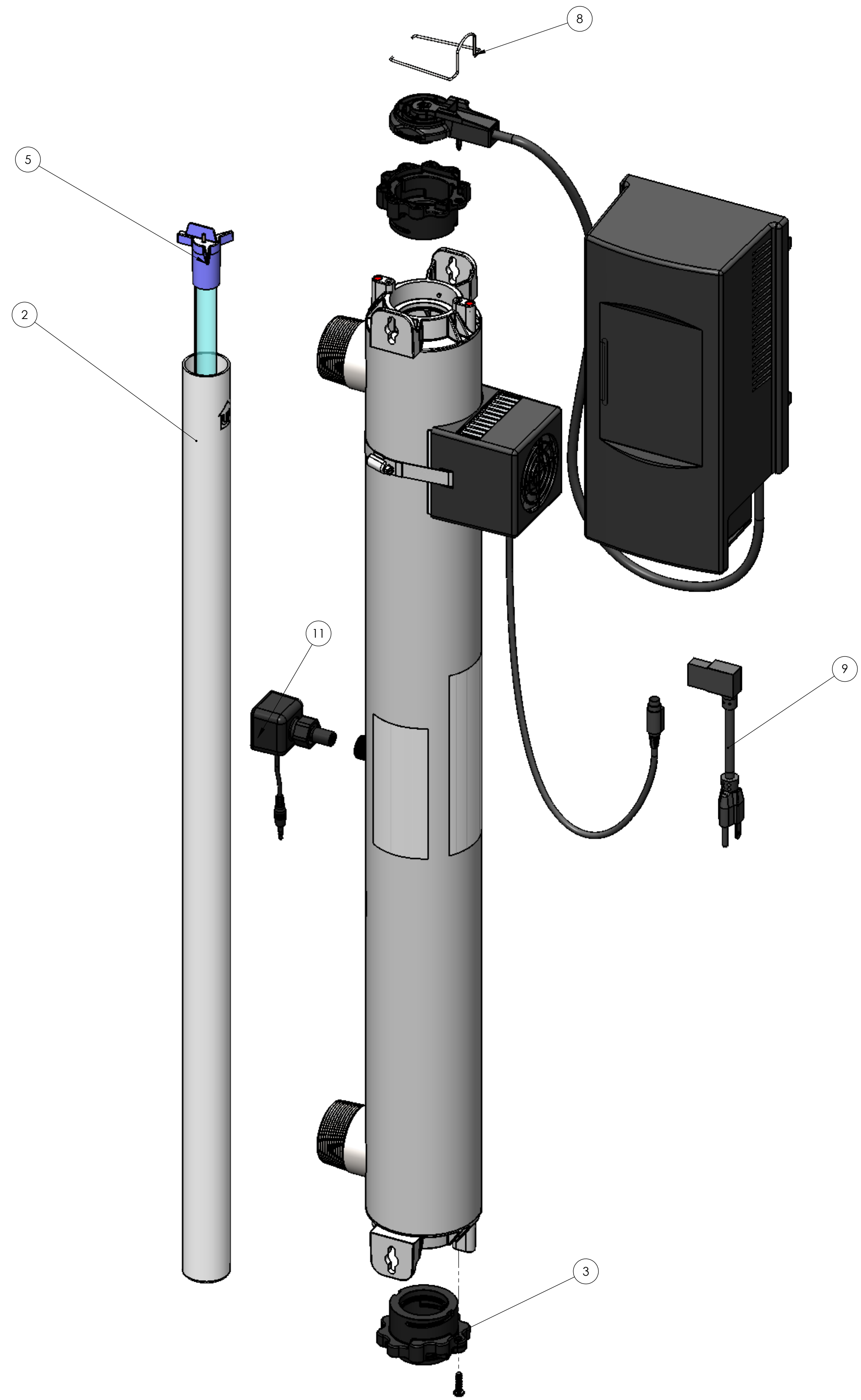
UNLESS OTHERWISE SPECIFIED:
 DO NOT SCALE DRAWING
 INTERPRET DIMENSIONS AND TOLERANCES PER ASME Y14.5M-1994
 DIMENSIONS ARE IN INCHES
 TOLERANCES APPLY AS SHOWN BELOW:
 2 PL DEC + 0.01
 3 PL DEC + 0.005
 ANGLE ± 0.3°
 REMOVE ALL BURRS. ALL CORNERS R.0010" OR BREAK EDGE. CRITICAL CHARACTERISTIC

CONFIDENTIALITY NOTICE
 COPYRIGHT 2009 BY TROJAN TECHNOLOGIES. ALL RIGHTS RESERVED. NO PART OF THIS DOCUMENT MAY BE REPRODUCED, STORED IN A RETRIEVAL SYSTEM, OR TRANSMITTED IN ANY FORM, WITHOUT THE WRITTEN PERMISSION OF TROJAN TECHNOLOGIES.
 SolidWorks MAINTAINED DATA. CHANGES SHALL BE INCORPORATED ELECTRONICALLY.

VIQUA
 A TROJAN TECHNOLOGIES COMPANY
 425 CLAIR ROAD WEST, GUELPH, ONTARIO, CANADA, N1L-1R1
 DESCRIPTION: UVMAX LIGHT COMMERCIAL SERIES

DWG NO. 660001RG
 MASS: 21.77 lbs
 SCALE 1:12
 SHEET 1 OF 2
 SIZE D

REV B



<p>UNLESS OTHERWISE SPECIFIED: DO NOT SCALE DRAWING INTERPRET DIMENSIONS AND TOLERANCES PER ASME Y14.5M-1994 DIMENSIONS ARE IN INCHES TOLERANCES APPLY AS SHOWN BELOW: 2 PL DEC + 0.01 3 PL DEC + 0.005 ANGLE ± 0.3° REMOVE ALL BURRS. ALL CORNERS R.0010" OR BREAK EDGE. CRITICAL CHARACTERISTIC</p>	<p>CONFIDENTIALITY NOTICE COPYRIGHT 2009 BY TROJAN TECHNOLOGIES. ALL RIGHTS RESERVED. NO PART OF THIS DOCUMENT MAY BE REPRODUCED, STORED IN A RETRIEVAL SYSTEM, OR TRANSMITTED IN ANY FORM, WITHOUT THE WRITTEN PERMISSION OF TROJAN TECHNOLOGIES. SolidWorks MAINTAINED DATA CHANGES SHALL BE INCORPORATED ELECTRONICALLY</p>	<p>VIQUA™ A TROJAN TECHNOLOGIES COMPANY 425 CLAIR ROAD WEST, GUELPH, ONTARIO, CANADA, N1L-1R1</p>	
		<p>DESCRIPTION UVMAX LIGHT COMMERCIAL SERIES</p>	
<p>DRAWN BY</p>	<p>DWG NO.</p>	<p>660001RG</p>	
<p>CREATED ON</p>	<p>RELEASE LOG # 09-R047</p>	<p>MASS: 21.77 lbs</p>	<p>SCALE 1:12 SHEET 2 OF 2 SIZE D</p>